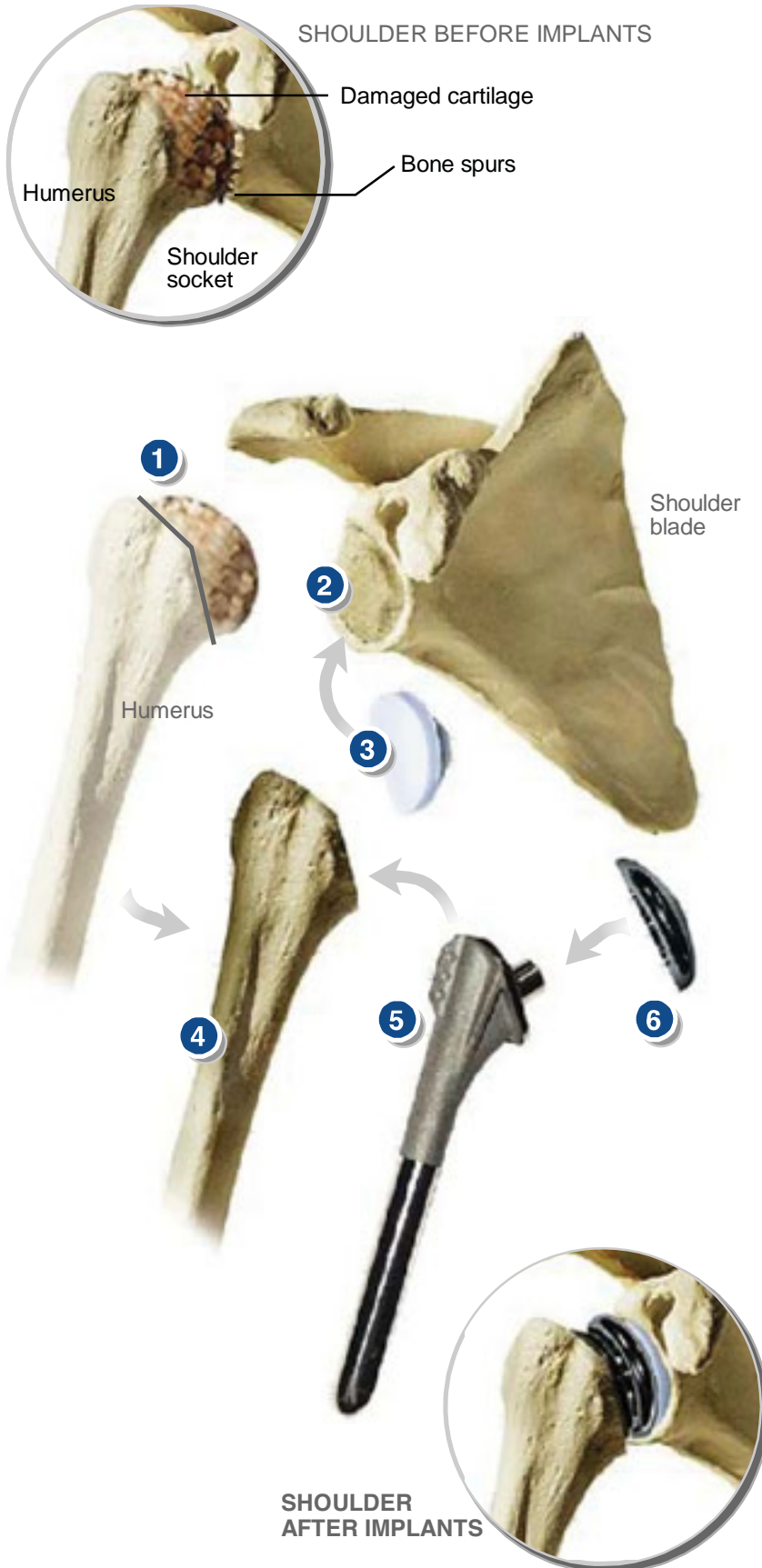


**TOTAL SHOULDER REPLACEMENT**



**Overview**

This surgery replaces the damaged or diseased head of the humerus (also called the ball) and cartilage from the shoulder joint with a metal and plastic joint.

**Humerus Head Removed**

First, the surgeon removes the head of the humerus.

**Glenoid Reshaped**

The surgeon then smooths and reshapes the shoulder socket (which is called the glenoid).

**Plastic Component Attached**

The plastic glenoid component is pressed into place with bone cement.

**Bone Hollowed Out**

The surgeon hollows out the upper portion of the humerus to receive the implant.

**Metal Stem Implanted**

The metal stem is implanted in the humerus. It may be secured with bone cement.

**Metal Head Attached**

A metal ball is placed onto the stem.

**End of Procedure**

The surgeon joins the repaired humerus and glenoid components to form the new shoulder joint.